

districtARTS

FALL 2020



ZOOMING IN

Top Ten Free Zoom
Classes for Artists
by Local Artists

INCREDIBLE & HORRIFYING

Lives Lost to
COVID-19
D.C. Art Exhibit

MUSEUMS IN THE PANDEMIC



Horace Pippin, *School Studies*, 1944.

56

Veterans Day: Letters from Home

Departments

Artists Showcase

17 Daughters of the Dust

Works by Julie Dash exploring the kinship and conflict among three generations of Gullah women

47 Pride Month in the Making

National LGBTQ+ artists come together to show their works

In This Month's Issue

29 Art on Lockdown

How are Museums are Coping with the COVID-19 Pandemic? What will be the future steps needed to reopen safely to the public?

58 Upcoming Exhibitions

61 Supplies Showcase



National Gallery Of Art, 2020.

79

Museums At Home:
Crafting Edition

In Every Issue

14 From the District

Words From Various Museums

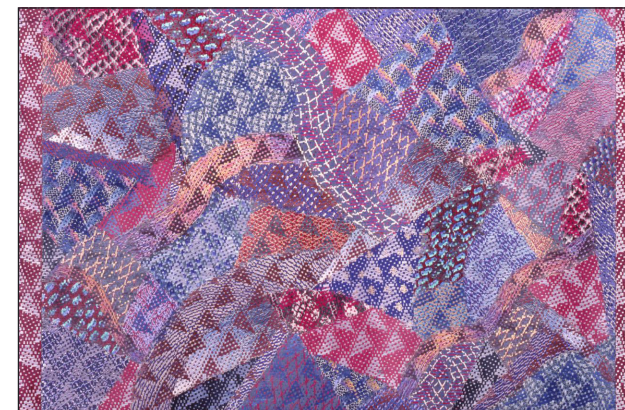
15 Upcoming Exhibitions

34 In Our Nation

Native American Women Making Masks for Thier Community

41 Inspiration Boards

Upcoming Exhibitions



Lia Cook, *Crazy Too Quilt* 1989.

SUBVERSIVE, SKILLED, SUBLIME: FIBER ART BY WOMEN

March 19, 2021 — August 15, 2021

Smithsonian American Art Museum

The artists in *Subversive, Skilled, Sublime: Fiber Art by Women* mastered and subverted the everyday materials of cotton, felt, and wool to create deeply personal artworks. This exhibition presents an alternative history of twentieth-century American art by showcasing the work of artists such as Emma Amos, Sheila Hicks, and Faith Ringgold, who, stitch by stitch, utilized fiber materials to express their personal stories and create resonant and intricate artworks.

¡PRINTING THE REVOLUTION! THE RISE AND IMPACT OF CHICANO GRAPHICS

November 20, 2020 — August 8, 2021

Smithsonian American Art Museum

In the 1960s, activist Chicano artists forged a remarkable history of printmaking that remains vital today. Many artists came of age during the civil rights, labor, anti-war, feminist and LGBTQ+ movements and channeled the period's social activism into assertive aesthetic statements that announced a new political and cultural consciousness among people of Mexican descent in the United States. *¡Printing the Revolution!* explores the rise of Chicano graphics within these early social movements and the ways in which Chicana artists since then have advanced innovative printmaking practices attuned to social justice.



Leonard Castellanos, *RIFA*, from *Méhicano Calendario*, 1976.

THE NEW WOMAN BEHIND THE CAMERA

February 14, 2021 — May 31, 2021

National Gallery Of Art

The New Woman of the 1920s was a powerful expression of modernity, a global phenomenon that embodied an ideal of female empowerment based on real women making revolutionary changes. Featuring more than 120 photographers from over 20 countries, this groundbreaking exhibition explores how women emerged as a driving force in modern photography from the 1920s to the 1950s, bringing their own perspectives to artistic experimentation, studio portraiture, fashion and advertising work, scenes of urban life, ethnography, and photojournalism.



Ilse Bing, *Self-Portrait with Leica* 1931.



Art Naim 2015.

MUSEUMS IN THE PANDEMIC

No one had expected the COVID-19 Pandemic. Lockdown has D.C. locals missing their museums. Many are turning to online exhibitions.

No one had expected the COVID-19 Pandemic to hit stateside. In March 2020, everything in the district had changed. The nation's capital had locked down for the safety of its people. All the museums and showcases had come to a halt as they were not prepared.

Most of the staff has been prepping for in person exhibitions and had to quickly move to make them all virtual. While around 40% of the previous exhibitions are put online, it was a challenge to get everything photographed on time for the launch dates of the exhibitions. Staff had to run around to get permissions from the artist to post online as that requires more paperwork, requiring more time in general, halting the process further.

Sally Jones, director of the Smithsonian Institute commented, "We have had to shut down before, but nothing like this before. We had to cancel so many events last minute and had to pull our sponsorships from our artists. We have been trying each day to update our sites and social medias with programs for those who may have had to cancel a trip to our museums. It's mind

boggling to think that everything happened so quickly and we felt that we had the rug pulled from under us. We cannot wait to reopen when it is safe for the community, but right now we have to take things day by day."

With plans to reopen there are some guidelines that will be in place. According to most of the Smithsonian's websites, "Visitors ages six and older are required to wear a face covering during their visit. Face coverings are also strongly recommended for visitors between the ages of two and six. Face shields or any kind of face covering or mask with an exhalation valve are not permitted. Face coverings should be worn over the nose and mouth and may be removed while drinking in designated spaces." Timed entry will also be a new protocol that will be enforced with free timed slots up to three hours.

Jones said, "We have to do what's best for our community and the public's health. We are trying to make the experience in person as "normal" as we possibly can but there will be some set backs here and there. We are following Washington D.C.'s health guidelines as closely as possible to insure the absolute safety of our guests." Jones also stated that while D.C.

Know Before You Go: Guidelines for Visiting:

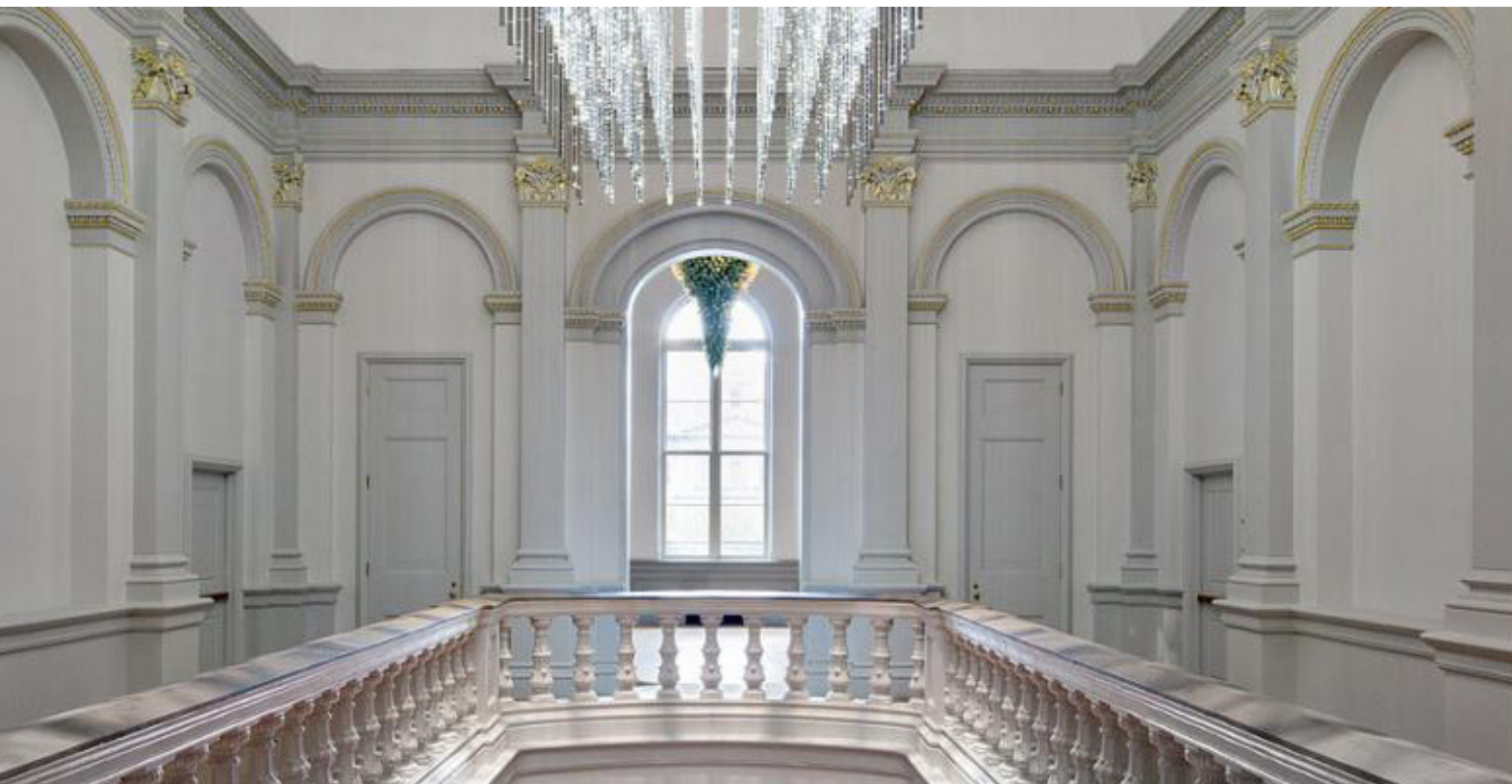
We're asking all visitors who are sick or feel unwell to please stay home. If you are at increased risk of severe illness, you may also want to consider staying home.

Face Coverings

Visitors ages six and older are required to wear a face covering during their visit. Face coverings are also strongly recommended for visitors between the ages of two and six. Face shields are not permitted as a substitute

has its own guidelines in place, they will be taking more precaution and going the extra step to insure safety for their staff and patrons.

If someone doesn't feel comfortable coming physically into the museums, there are tons of resources and options online now that staffers have put up. There are tons of beautiful virtual exhibitions, online seminars, craft tutorials for kids, and more. Keisha Maya, head of the Lessons and Activities program, had this to say, "While I was looking forward to tourist season, as that's when all the schools come, I had to make sure I could do my best with stuffing our website as full as possible with activities that anyone can do at home. I've contacted educators to see what they were doing so we can help balance and create art in all their subjects, we wanted teachers to use our site as sort of a planning zone, so to speak.



An empty Renwick Gallery. The Renwick 2020.

for a face covering but may be worn over a face covering or mask. Face coverings or masks with an exhalation valve are not permitted.

Face coverings should be worn over the nose and mouth. Face coverings may be removed while eating or drinking in designated spaces.

Social Distancing

Please maintain a safe social distance of six feet or more between households or groups at all times. There will be social-distancing signage and directions.

We still are offering our teacher workshops for over breaks, totally 100% on Zoom. We are so excited as we have had tons to teachers sign up as they want to make sure they are interacting and enriching their students' lives through art." While there is a huge difference in being able to go and physically see artwork on display, everyone that works throughout the museums have been doing their best to cope and adapt with the situation.

While right now there is no date on when things will get back to "normal", mostly everyone has been adapting in the ways that they can. The Smithsonian has been trying their hardest to get everything out to the public, since they know they will most likely be in this situation for a while. The public can always reach out to the Smithsonian via online, as they are asking for what they can do better to share their art.



"We cannot wait to reopen when it is safe for the community, but right now we have to take things day by day...."—Sally Jones

Ryan Spencer 2019.